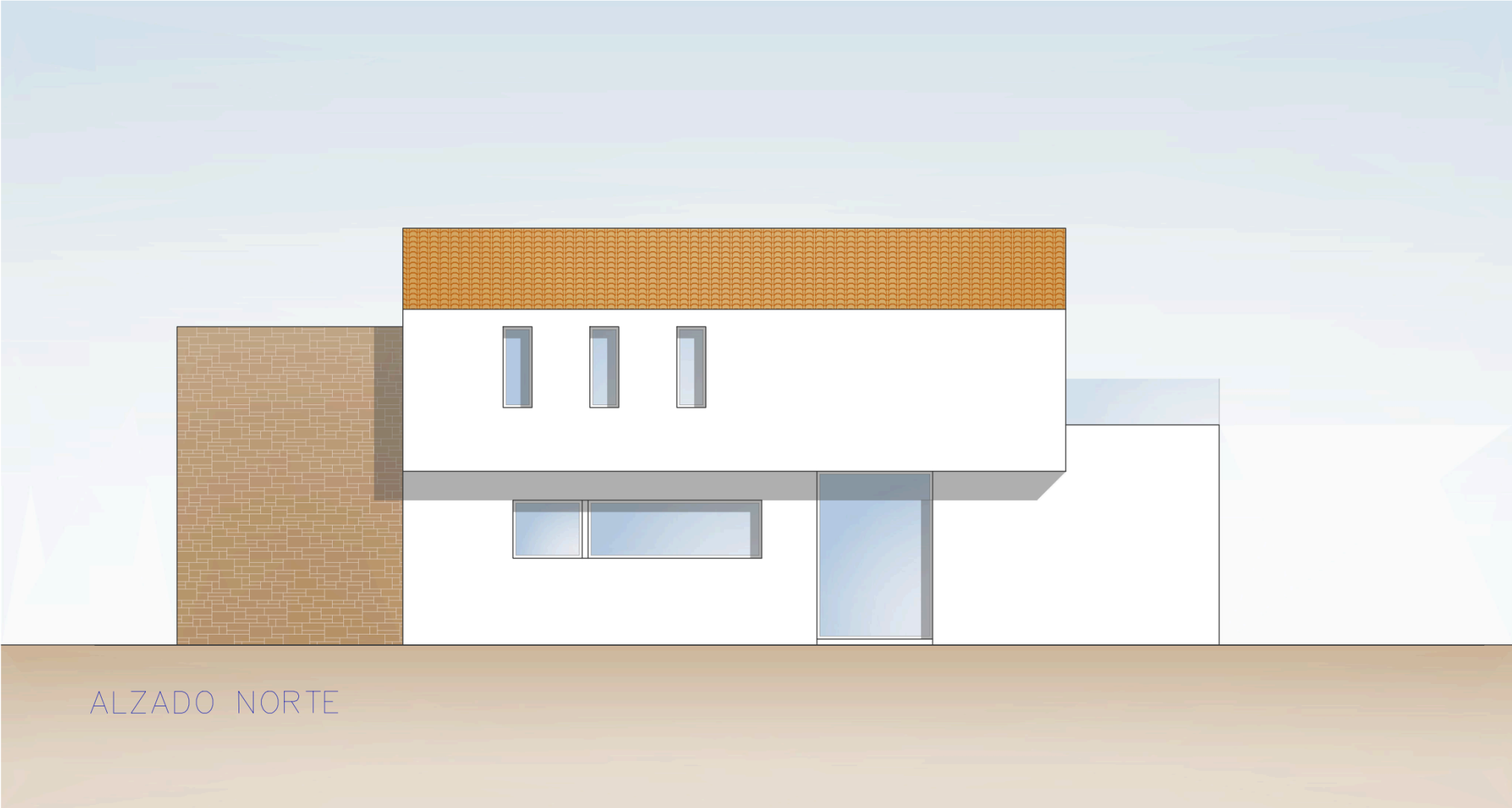
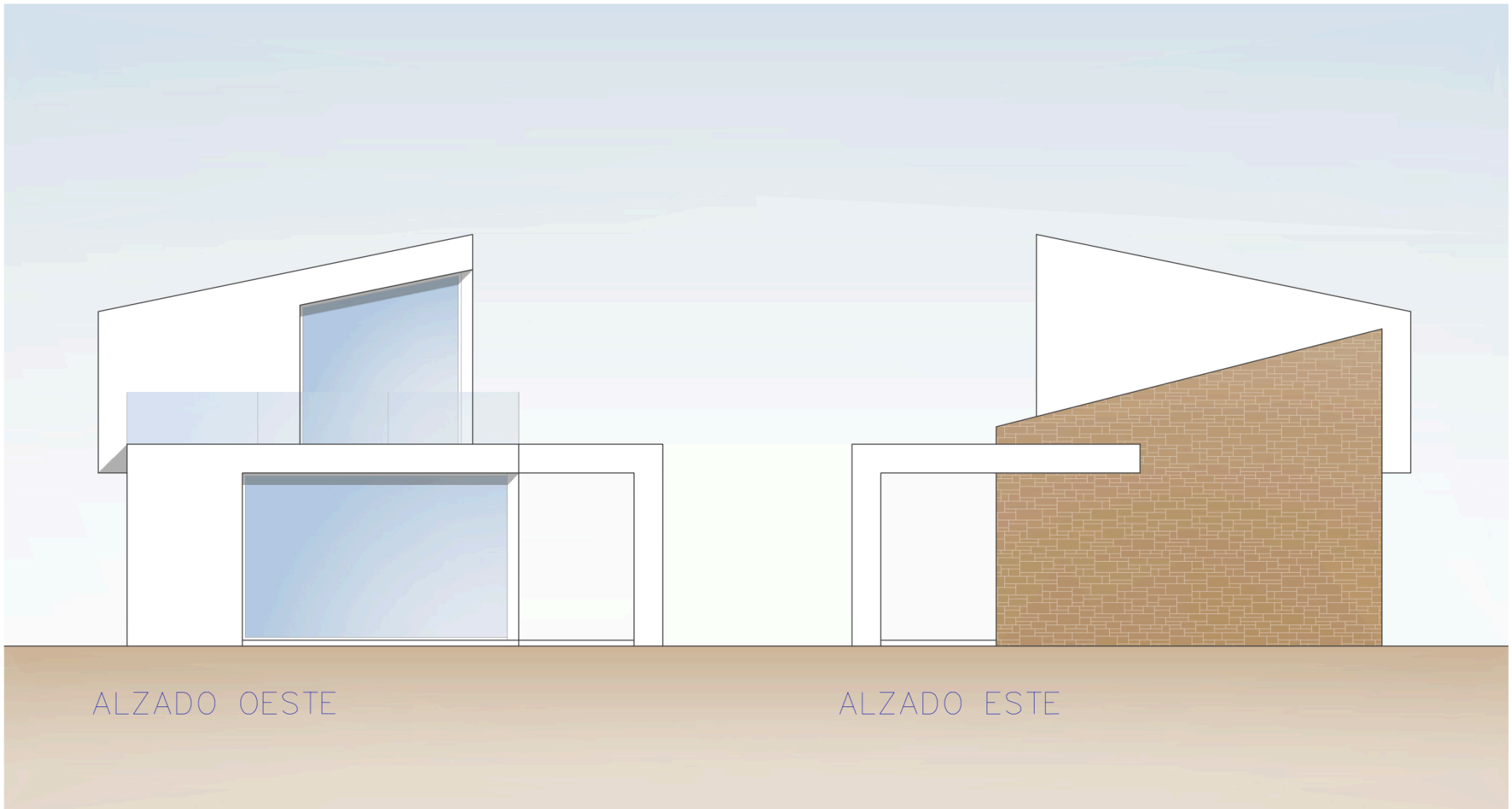




ALZADO SUR



ALZADO NORTE



ALZADO OESTE

ALZADO ESTE



# PLANTA BAJA

SUP. CONST. PL. BAJA	= 154.09m <sup>2</sup>
SUP. CONST. VIVIENDA	= 123.84m <sup>2</sup>
SUP. CONST. PORCHE	= 30.25m <sup>2</sup>
SUP. CONST. PL. PRIMERA	= 103.65m <sup>2</sup>
SUP. CONST. VIVIENDA	= 85.63m <sup>2</sup>
SUP. CONST. TERRAZA	= 18.02m <sup>2</sup>
SUP. CONST. TOTAL	= 257.74m <sup>2</sup>



PLANTA PRIMERA

SUP. CONST. PL. BAJA	= 154.09m <sup>2</sup>
SUP. CONST. VIVIENDA	= 123.84m <sup>2</sup>
SUP. CONST. PORCHE	= 30.25m <sup>2</sup>
SUP. CONST. PL. PRIMERA	= 103.65m <sup>2</sup>
SUP. CONST. VIVIENDA	= 85.63m <sup>2</sup>
SUP. CONST. TERRAZA	= 18.02m <sup>2</sup>
SUP. CONST. TOTAL	= 257.74m <sup>2</sup>